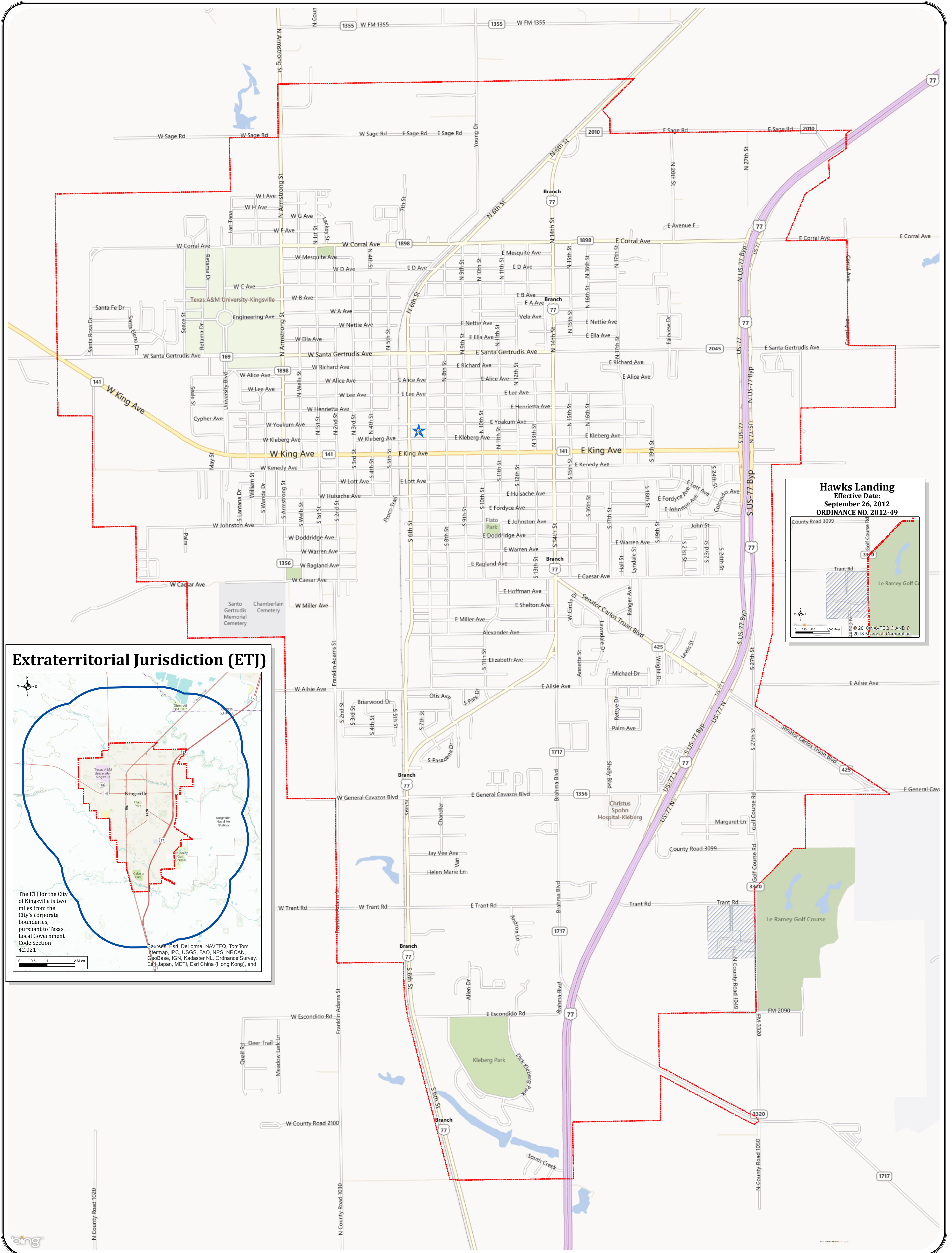


City of Kingsville - City Limits and Extraterritorial Jurisdiction



Hawks Landing
 Effective Date:
 September 26, 2012
 ORDINANCE NO. 2012-49

Extraterritorial Jurisdiction (ETJ)

The ETJ for the City of Kingsville is two miles from the City's corporate boundaries, pursuant to Texas Local Government Code Section 42.021.

Source: Esri, DeLorme, NAVTEQ, TomTom, Intermap, IPC, USGS, FAO, NPS, NRCAN, Esri, IGN, Kadaster NL, Ordnance Survey, Esri Japan, METI, Esri China (Hong Kong), and Swire.

Legend

- ETJ Zone
- City Limits

Page
1 / 1

Drawn By: Lisa McLaughlin and JR Cavazos
 Updated: 2/21/2013
 Job #:
 Note:

DISCLAIMER
 THIS MAP IS FOR VISUAL PURPOSES ONLY. THE INFORMATION ON THIS SHEET MAY CONTAIN INACCURACIES OR ERRORS. THE CITY OF KINGSVILLE IS NOT RESPONSIBLE IF THE INFORMATION CONTAINED HEREIN IS USED FOR ANY DESIGN, CONSTRUCTION, PLANNING, BUILDING, OR ANY OTHER PURPOSE.

200 East Kleberg
 Kingsville, Texas 78363
 Office: 361-595-8005
 Fax: 361-595-8035

0 6,000 12,000 24,000 Feet