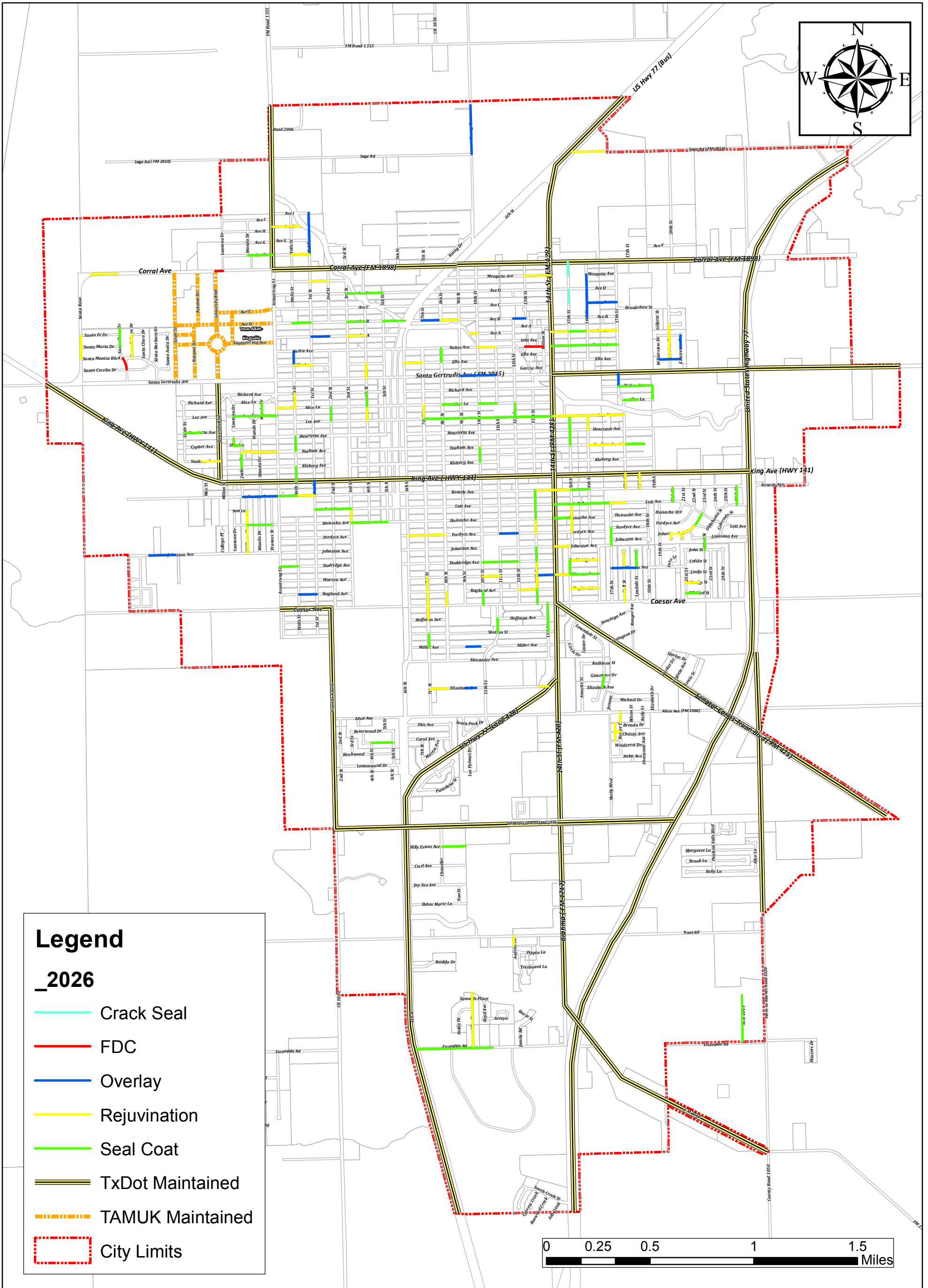
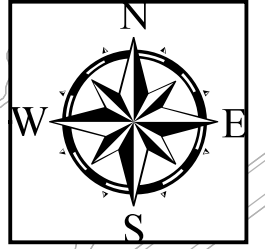


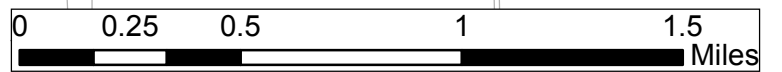
# Construction 2026



## Legend

**\_2026**

- Crack Seal
- - - FDC
- Overlay
- Rejuvenation
- Seal Coat
- TxDot Maintained
- TAMUK Maintained
- City Limits



Page 1 / 1	Drawn By: Engineering Department
	Last Update: 11/9/2015
	Note:

DISCLAIMER  
THIS MAP IS FOR VISUAL PURPOSES ONLY.  
THE INFORMATION ON THIS SHEET MAY  
CONTAIN INACCURACIES OR ERRORS.  
THE CITY OF KINGSVILLE IS NOT  
RESPONSIBLE IF THE INFORMATION CONTAINED  
HEREIN IS USED FOR ANY DESIGN,  
CONSTRUCTION, PLANNING, BUILDING,  
OR ANY OTHER PURPOSE.



**CITY OF KINGSVILLE**  
**ENGINEERING DEPARTMENT**  
200 E. Kleberg  
Kingsville, Texas 78363  
Office: 361 595 8005  
Fax: 361 595 8035