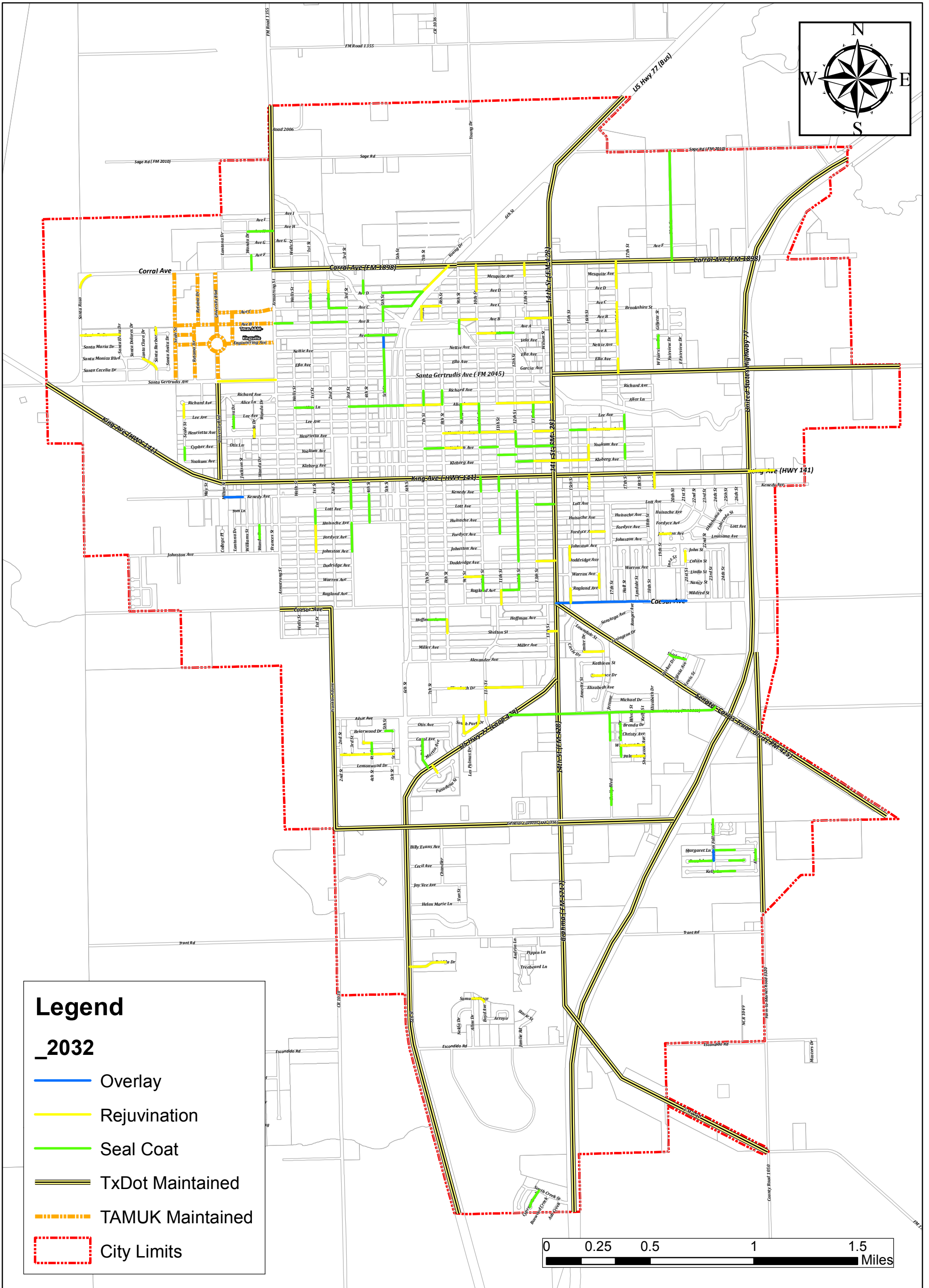
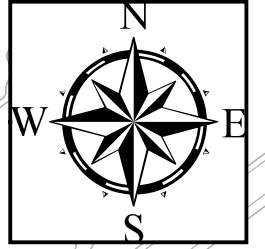


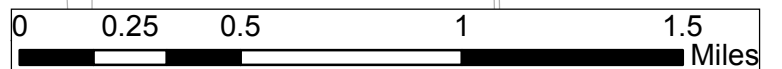
Construction 2032



Legend

_2032

- Overlay
- Rejuvenation
- Seal Coat
- TxDot Maintained
- TAMUK Maintained
- City Limits



Page 1 / 1	Drawn By: Engineering Department
	Last Update: 11/9/2015
	Note:

DISCLAIMER
THIS MAP IS FOR VISUAL PURPOSES ONLY.
THE INFORMATION ON THIS SHEET MAY
CONTAIN INACCURACIES OR ERRORS.
THE CITY OF KINGSVILLE IS NOT
RESPONSIBLE IF THE INFORMATION CONTAINED
HEREIN IS USED FOR ANY DESIGN,
CONSTRUCTION, PLANNING, BUILDING,
OR ANY OTHER PURPOSE.



CITY OF KINGSVILLE
ENGINEERING DEPARTMENT

200 E. Kleberg
Kingsville, Texas 78363
Office: 361 595 8005
Fax: 361 595 8035