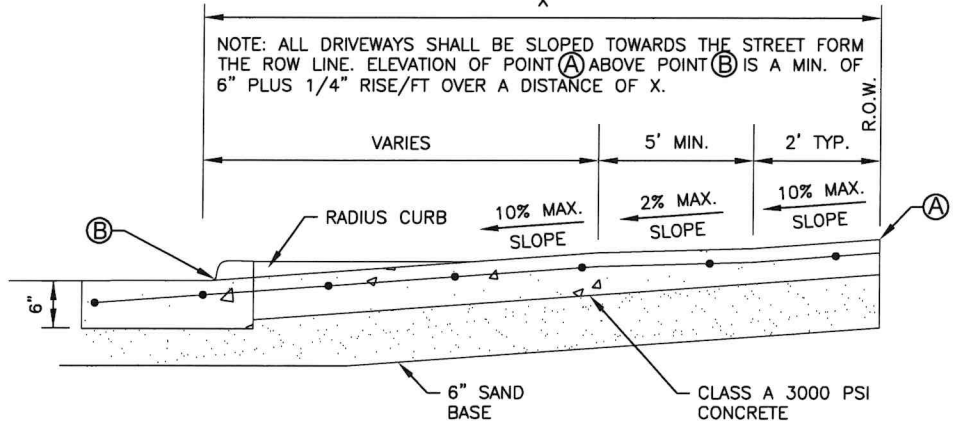


MATCH CATCH/SPILL GUTTER SECTION OF EXISTING CURB & GUTTER

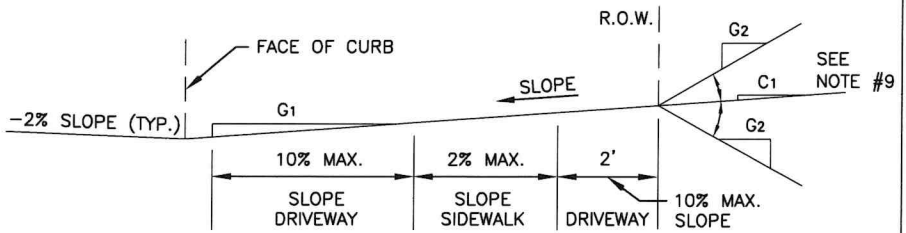
NOTE: ALL DRIVEWAYS SHALL BE SLOPED TOWARDS THE STREET FROM THE ROW LINE. ELEVATION OF POINT (A) ABOVE POINT (B) IS A MIN. OF 6" PLUS 1/4" RISE/FT OVER A DISTANCE OF X.



CROSS SECTION "C" - "C"

USER	THICKNESS	REINFORCEMENT	DRIVEWAY WIDTH
RESIDENTIAL DRIVEWAYS; DRIVEWAYS FOR PASSENGER VEHICLE PARKING LOTS	6" MIN.	#4 BARS @ 18" O.C.E.W.	9' MIN. - 24' MAX.
NON-RESIDENTIAL	7" MIN.	#4 BARS @ 12" O.C.E.W.	24' MIN. - 35' MAX.

- DRIVEWAY RADIUS ENDS ARE OPTIONAL.
- DRIVEWAY WIDTHS AND RADII DIMENSIONS, ONE/TWO WAY TRAVEL REQUIREMENTS, AND GEOMETRIC LAY-OUT ARE HIGHLY VARIABLE SUBJECT TO SITE SPECIFIC CONDITIONS AND REQUIREMENTS.
- "ZERO" CURB AT PT. TRANSITIONS SIDEWALK TO MATCH DRIVEWAY.
- PLACE AN EXPANSION JOINT DOWN THE CENTER OF DRIVEWAYS WIDER THAN 30 FEET.
- IF DIMENSION IS LESS THAN FIVE FEET, REMOVE CURB AND GUTTER TO EXISTING EXPANSION JOINT AND POUR MONOLITHICALLY WITH DRIVEWAY.
- IF THE BASE IS OVER-EXCAVATED WHERE THE CURB AND GUTTER WAS REMOVED, BACKFILL WITH CONCRETE MONOLITHICALLY WITH DRIVEWAY.
- DRIVEWAYS ARE TO BE LOCATED NO CLOSER TO THE CORNER OF INTERSECTING RIGHTS OF WAY THAN 60 PERCENT OF PARCEL FRONTAGE OR 100 FEET; WHICHEVER IS LESS.
- DRIVEWAYS SHALL NOT BE CONSTRUCTED WITHIN THE CURB RETURN OF A STREET INTERSECTION.
- WHILE THE PROPERTY OWNER REMAINS RESPONSIBLE FOR GRADE BREAKS WITHIN PRIVATE PROPERTY, THE FIRE DEPARTMENT SHOULD BE CONSULTED WHERE THE DRIVEWAY IS ESSENTIAL TO EMERGENCY VEHICLE ACCESS AND "C2" IS GREATER THAN 15%.
- USE 1/2" ASPHALT BOARD OR OTHER APPROVAL MATERIAL FOR CURB AND GUTTER EXPANSION JOINTS, SIDEWALKS, AT THE ROW LINE, AND AT MIDWIDTH (NOTE 4).



DRIVEWAY VOLUME (ADT)	D= GRADE CHANGE	
	STD.	MAX.
> 1,500	0%	3%
500 - 1,500	3%	6%
< 500	6%	15%

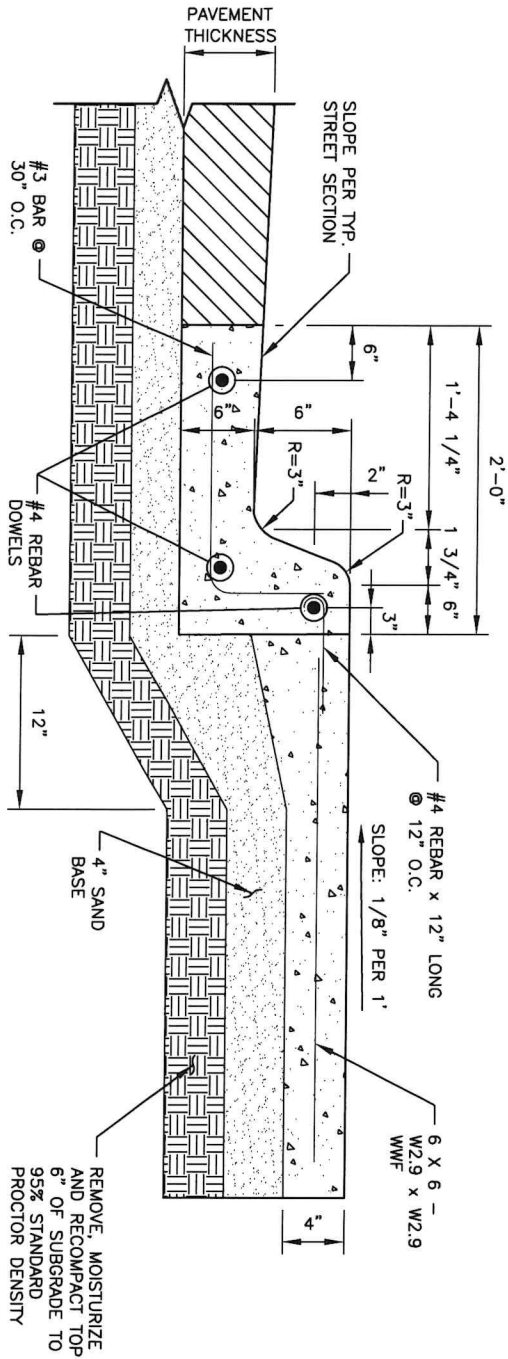
REVISED
05-31-2023

CITY OF KINGSVILLE
CONCRETE DRIVEWAY DETAILS

Drawn by: J. RAMIREZ
Date: 04-12-2023
Checked by: R. MORA
Job:
Scale: AS NOTED

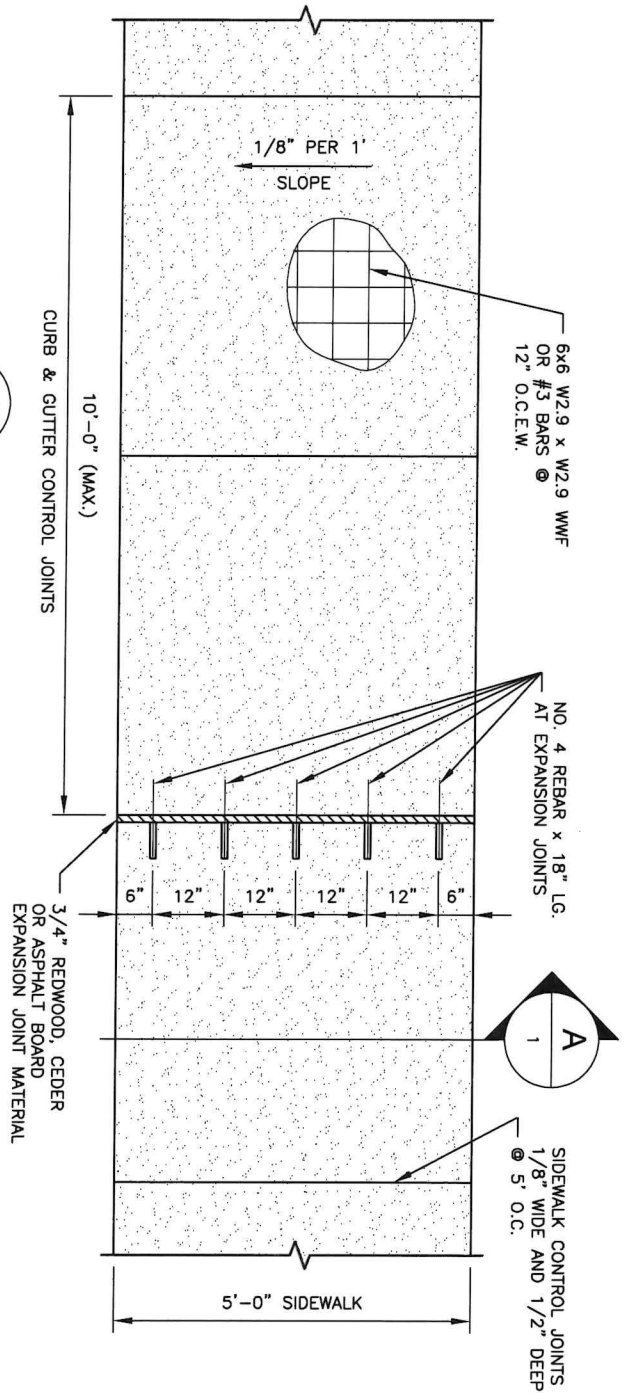


CITY OF KINGSVILLE
ENGINEERING DEPARTMENT
400 West King
Kingsville, Texas 78363
Office 361.595.8007
Fax 361.595.8035



A
SECTION
1 N.T.S.

1
CONCRETE SIDEWALK DETAIL
1 N.T.S.



A
SECTION
1 N.T.S.

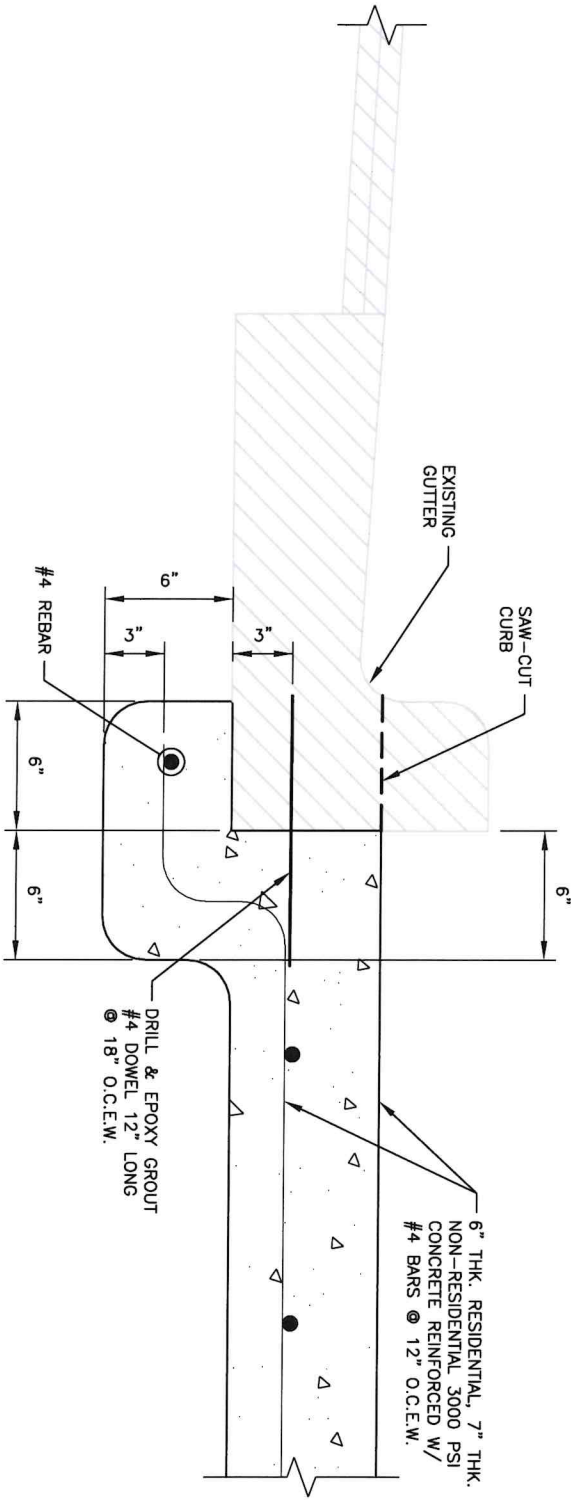
REVISED
05-31-2023

CITY OF KINGSVILLE
SIDEWALK DETAILS

Drawn by: J. RAMIREZ
Date: 04-12-2023
Checked by: R. MORA
Job:
Scale: AS NOTED



CITY OF KINGSVILLE
ENGINEERING DEPARTMENT
400 West King
Kingsville, Texas 78363
Office 361.595.8007
Fax 361.595.8035



1 DRIVEWAY CURB BREAK DETAIL
1 N.T.S.

REVISED
05-31-2023

CITY OF KINGSVILLE
SIDEWALK DETAILS

Drawn by: J. RAMIREZ
Date: 04-12-2023
Checked by: R. MORA
Job:
Scale: AS NOTED



CITY OF KINGSVILLE
ENGINEERING DEPARTMENT
400 West King
Kingsville, Texas 78363
Office 361.595.8007
Fax 361.595.8035