



P. O. BOX 1458 - KINGSVILLE, TEXAS 78364

Addendum No. 1

**CDBG-MIT GLO CONTRACT NO. 22-085-009-D237
(CITY OF KINGSVILLE BID NO. 26-04)**

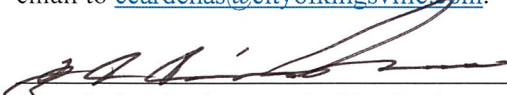
CITY OF KINGSVILLE GLO SW PROJECT 7 (S. 6TH ST.) STORM WATER IMPROVEMENTS

The above referenced Bid Opening is modified to provide additional information as follows:

- I. **Please note that the opening date of Tuesday, June 2, 2026 at 2:00 PM has been extended to Thursday, June 11, 2026 at 10:00 AM.**
- II. Added a new item on the ESTIMATED QUANTITIES SUMMARY – TOTALS TABLE “A35 RE-GRADE DITCH 2358 LF”. Revised NOTE section by adding “TRENCH SAFETY” to NOTE 2. Drawing No. C4.
- III. Added a new item on the SHEET QUANTITIES SUMMARY TABLE “ A35 RE-GRADE DITCH”. Changed callout “SWALE FLOW LINE” to “RE-GRADE DITCH”. Revised NOTES by adding “5. TRENCH EXCAVATION, TRENCH SAFETY, BACKFILL, AND COMPACTION ARE ALL SUBSIDIARY TO LINE ITEM.”. Drawing No. C14 to C20.
- IV. Relocation of the OUTFALL structure and CONCRETE RIP RAP. Drawing No. C14.
- V. Added new sheets titled, “TXDOT- CONCRETE WINGWALLS WITH FLARED WINGS”, and “TXDOT – EXTENDED CURB DETAILS”. Drawing No. 35 and C58.
- VI. Updated Engineer’s Estimate for Items “A28” and “A35”.
- VII. Updated WAGE RATE ISSUANCE NOTICE with current Department of Labor data.

A signed copy of this Addendum No. 1 must accompany each proposal submission. In doing so, the Proposer acknowledges receipt of this Addendum No. 1, and agrees if selected as the successful Proposer, to be bound by the terms as amended. All terms of Bid No. 26-04 which are not amended hereby, remain in full force and effect.

Questions concerning this Addendum No. 1 should be addressed to City Engineer, Juan Carlos Cardenas, P.E. via email to ccardenas@cityofkingsville.com.



Juan Carlos Cardenas, P.E., City Engineer

5/28/26
Date

Acknowledgement of Addendum No. 1:

By: _____ Title: _____

Signed: _____

Construction Advertisement and Invitation for Bids

The City of Kingsville will receive bids for GLO SW PROJECT 7 (S. 6TH ST.) STORM WATER IMPROVEMENTS CDBG-MIT GLO CONTRACT NO. 22-085-009-D237 until 10:00 a.m. on (Thursday, June 11, 2026) at 400 W. King Ave, Kingsville, Tx 78363. Bids must be addressed to: Juan Carlos "Charlie" Cardenas, P.E. The bids will be publicly opened and read aloud at 10:00 a.m. on (Thursday, June 11, 2026) at 400 W. King Ave, Kingsville, Tx 78363.

An optional pre-bid site meeting is scheduled for Tuesday, May 26, 2026 at 10:00 a.m. at the City of Kingsville, 400 W. King Ave, Kingsville, TX 78363.

Bids are invited for several items and quantities of work as follows:

1. Base Bid

ITEM	DESCRIPTION	UNIT	QTY.	UNIT COST	TOTAL
A1	Mobilization / Bonds / Insurance	LS	1		
A2	Traffic Control	LS	1		
A3	Utility Adjustment	LS	1		
A4	SWPP (Sediment Control Fence)	LF	278		
A5	SWPP (Erosion Control Log)	LF	116		
A6	Remove Existing Street Asphalt	SY	120		
A7	Remove Driveway Asphalt	SY	60		
A8	Remove Section of Existing 18"Ø RCP	LF	24		
A9	Remove Section of Existing 24"Ø RCP	LF	50		
A10	Remove Section of Existing 36"Ø RCP	LF	18		
A11	Remove Section of Existing 42"Ø RCP	LF	12		
A12	Remove Existing 54"Ø RCP	LF	2302		
A13	Remove Existing Post Inlet	EA	5		
A14	Remove Existing Grate Inlet	EA	1		
A15	Remove Existing Concrete Outfall Structure	EA	1		
A16	Remove Existing Junction Box	EA	1		
A17	Post Inlet	EA	5		
A18	Post Inlet Riser	EA	3		
A19	Junction Box Type 'A'	EA	2		
A20	18"Ø RCP	LF	16		
A21	24"Ø RCP	LF	32		
A22	36"Ø RCP	LF	8		
A23	42"Ø RCP	LF	8		
A24	54"Ø RCP	LF	471		
A25	8'x4' RCB	LF	2083		
A26	Concrete Collar	EA	8		
A27	Concrete Outfall Structure	EA	1		
A28	Concrete Rip-Rap	SY	61		
A29	Repair Street Asphalt	SY	120		
A30	Repair Driveway Asphalt	SY	60		
A31	Plug and Abandon Existing RCP	EA	2		
A32	Remove Existing Curb & Gutter	LF	6		
A33	Repair Curb & Gutter	LF	6		
A34	Remove and Re-place Existing Sign	LS	1		
A35	Re-Grade Ditch	LF	2358		

TOTAL BID \$ _____

2. Additive Bid No.1

ITEM	DESCRIPTION	UNIT	QTY	UNIT COST	TOTAL
A24	54"Ø RCP	LF	-458		
B1	Remove Existing Driveway Asphalt	SY	58		
B2	Remove Existing Street Asphalt	SY	134		
B3	Remove Section of Existing 24"Ø RCP	LF	18		
B4	Repair Driveway Asphalt	SY	58		
B5	Repair Street Asphalt	SY	134		
B6	24"Ø RCP	LF	16		
B7	8'x4' RCB	LF	1023		
B8	Concrete Collar	EA	2		
B9	Remove Existing 54"Ø RCP	LF	564		
B10	Remove and Re-place Existing Sign	LS	1		
B11	Mill and Overlay Existing Street Asphalt	SY	482		
B12	Post Inlet Riser	EA	3		

TOTAL BID \$ _____

Bid/Contract Documents, including Drawings and Technical Specifications are on file at 400 W. King Ave. Kingsville, Tx 78363.

A bid bond in the amount of 5 percent of the bid issued by an acceptable surety shall be submitted with each bid [for those contracts that exceed \$100,000]. A certified check or bank draft payable to the City of Kingsville or negotiable U.S. Government Bonds (as par value) may be submitted in lieu of the Bid Bond.

The project to be constructed will be financed with assistance from the General Land Office (GLO) under the U.S. Department of Housing and Urban Development Community Development Block Grant - Mitigation (CDBG-MIT) program and is subject to all applicable Federal and State laws and regulations. Attention is called to the fact that not less than, the federally determined prevailing Davis-Bacon and Related Acts wage rate, as issued by the Department of Labor and contained in the contract documents, must be paid on this project. In addition, the successful bidder must ensure that employees and applicants for employment are not discriminated against because of race, color, religion, sex, sexual orientation, gender identity, or national origin. Adherence to the City of Kingsville Section 3 Policy is required for all contracts.

All contractors and subcontractors must be cleared (not suspended or debarred) prior to any formal action authorizing the award of a contract to the contractor. Minority Business Enterprises, Small Business Enterprises, Women Business Enterprises, veteran-owned businesses, Section 3 business, and labor surplus area firms are encouraged to submit bids.

The City of Kingsville reserves the right to reject any or all bids or to waive any informalities in the bidding. Bids may be held by City of Kingsville for a period not to exceed 60 days from the date of the bid opening for the purpose of reviewing the bids and investigating the bidder's qualifications prior to the contract award.

City of Kingsville

Juan Carlos Cardenas, P.E.

City Engineer

Engineer's Estimate

City of Kingsville
 GLO SW Project 7
 S. 6th St. Storm Water Improvements
 CDBG-MIT GLO Contract NO. 22-085-009-D237
 City of Kingsville Bid No. 26-04

Bids are invited for several items and quantities of work as follows:

1. Base Bid

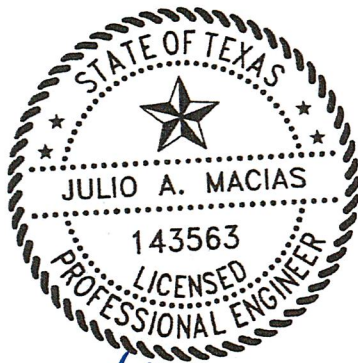
ITEM	DESCRIPTION	UNIT	QTY.	UNIT COST	TOTAL
A1	Mobilization / Bonds / Insurance	LS	1	\$	\$
A2	Traffic Control	LS	1	\$	\$
A3	Utility Adjustment	LS	1	\$	\$
A4	SWPP (Sediment Control Fence)	LF	278	\$	\$
A5	SWPP (Erosion Control Log)	LF	116	\$	\$
A6	Remove Existing Street Asphalt	SY	120	\$	\$
A7	Remove Driveway Asphalt	SY	60	\$	\$
A8	Remove Section of Existing 18"Ø RCP	LF	24	\$	\$
A9	Remove Section of Existing 24"Ø RCP	LF	50	\$	\$
A10	Remove Section of Existing 36"Ø RCP	LF	18	\$	\$
A11	Remove Section of Existing 42"Ø RCP	LF	12	\$	\$
A12	Remove Existing 54"Ø RCP	LF	2302	\$	\$
A13	Remove Existing Post Inlet	EA	5	\$	\$
A14	Remove Existing Grate Inlet	EA	1	\$	\$
A15	Remove Existing Concrete Outfall Structure	EA	1	\$	\$
A16	Remove Existing Junction Box	EA	1	\$	\$
A17	Post Inlet	EA	5	\$	\$
A18	Post Inlet Riser	EA	3	\$	\$
A19	Junction Box Type 'A'	EA	2	\$	\$
A20	18"Ø RCP	LF	16	\$	\$
A21	24"Ø RCP	LF	32	\$	\$
A22	36"Ø RCP	LF	8	\$	\$
A23	42"Ø RCP	LF	8	\$	\$
A24	54"Ø RCP	LF	471	\$	\$
A25	8'x4' RCB	LF	2083	\$	\$
A26	Concrete Collar	EA	8	\$	\$
A27	Concrete Outfall Structure	EA	1	\$	\$
A28	Concrete Rip-Rap	SY	61	\$	\$
A29	Repair Street Asphalt	SY	120	\$	\$
A30	Repair Driveway Asphalt	SY	60	\$	\$
A31	Plug and Abandon Existing RCP	EA	2	\$	\$
A32	Remove Existing Curb & Gutter	LF	6	\$	\$
A33	Repair Curb & Gutter	LF	6	\$	\$
A34	Remove and Re-place Existing Sign	LS	1	\$	\$
A35	Re-Grade Ditch	LF	2358	\$	\$

TOTAL BID \$ _____
 ENGINEER'S ESTIMATE \$ 5,830,828.00

2. Additive Bid No.1

ITEM	DESCRIPTION	UNIT	QTY	UNIT COST	TOTAL
A24	54"Ø RCP	LF	-458	\$	\$
B1	Utility Adjustment	LF	1	\$	\$
B2	Remove Existing Driveway Asphalt	SY	58	\$	\$
B3	Remove Existing Street Asphalt	SY	134	\$	\$
B4	Remove Section of Existing 24"Ø RCP	LF	18	\$	\$
B5	Repair Driveway Asphalt	SY	58	\$	\$
B6	Repair Street Asphalt	SY	134	\$	\$
B7	24"Ø RCP	LF	16	\$	\$
B8	8'x4' RCB	LF	1023	\$	\$
B9	Concrete Collar	EA	2	\$	\$
B10	Remove Existing 54"Ø RCP	LF	564	\$	\$
B11	Remove and Re-place Existing Sign	LS	1	\$	\$
B12	Mill and Overlay Existing Street Asphalt	SY	482	\$	\$

TOTAL BID \$ _____
 ENGINEER'S ESTIMATE \$ 1,760,680.00

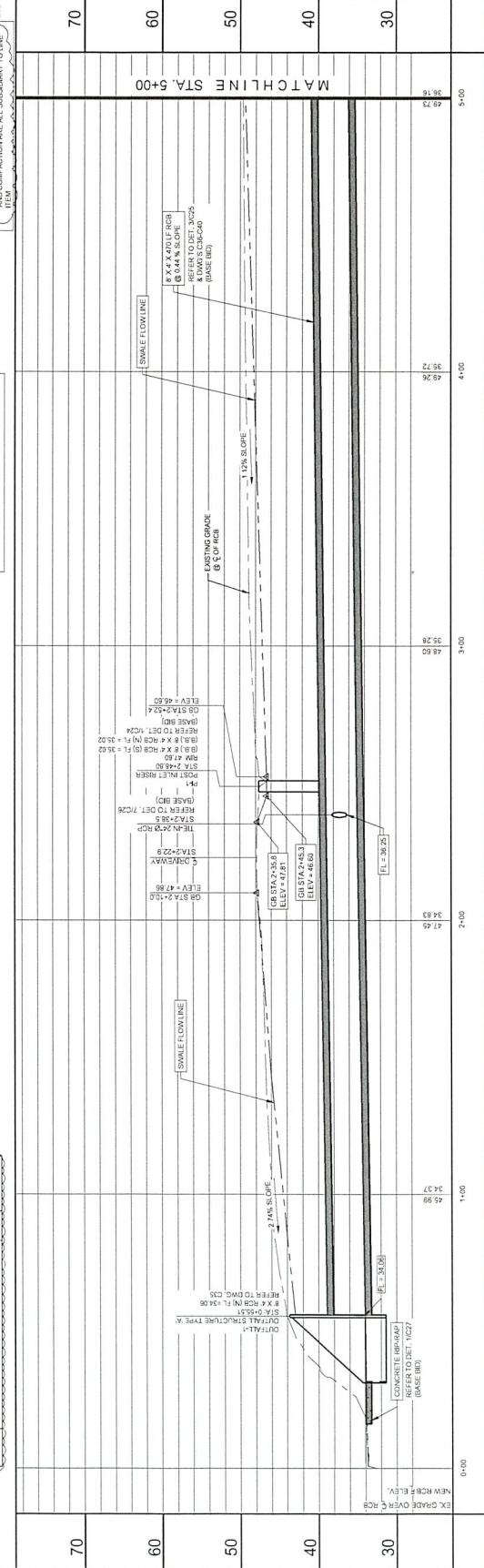
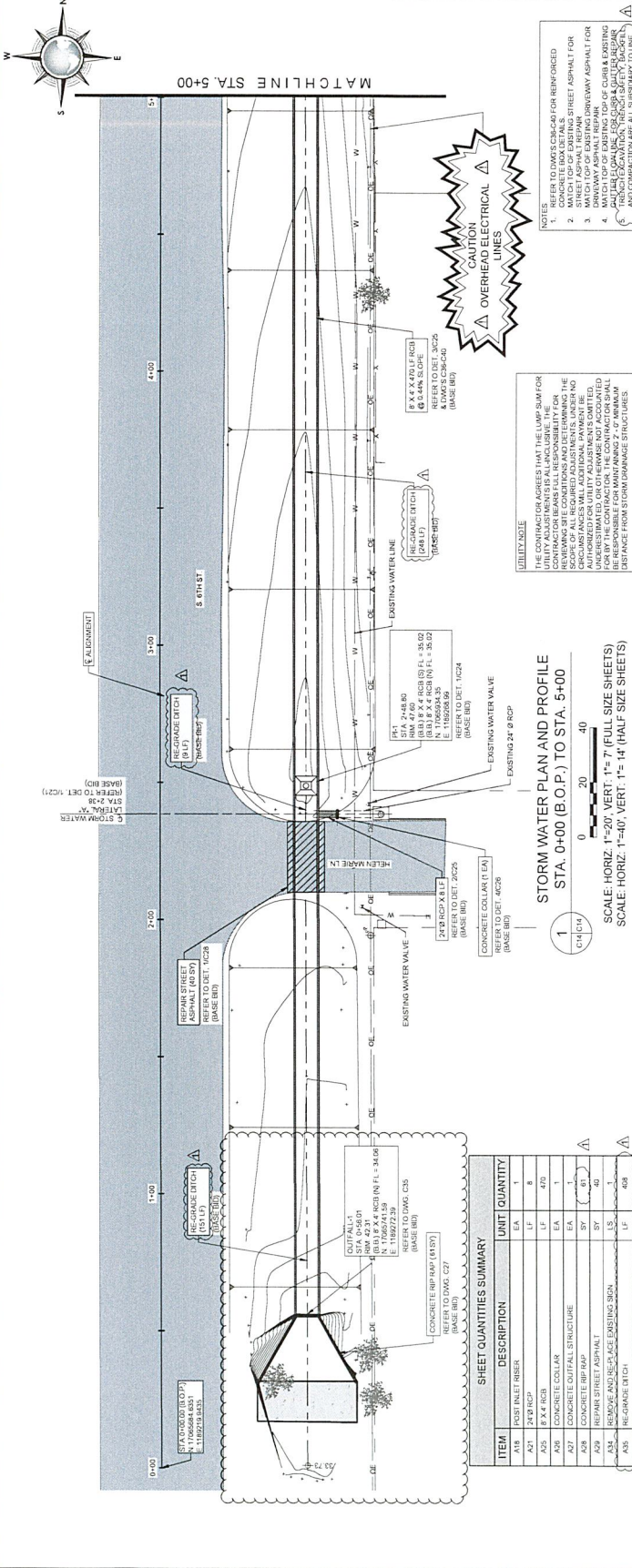


Julio A. Macias, P.E.
 5/27/2026

Julio A. Macias, P.E.
 Project Engineer

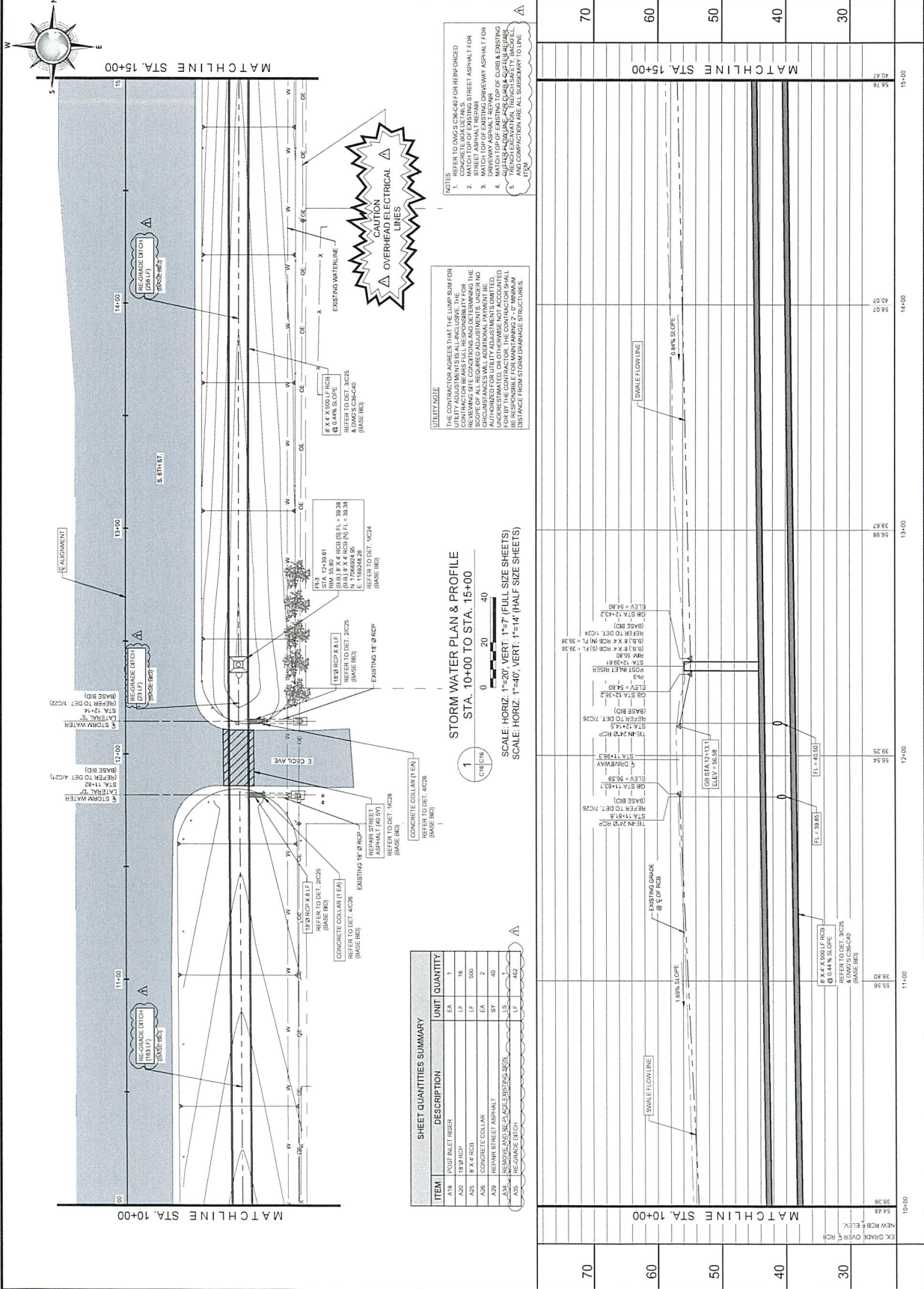


REVISION NO.	DATE	BY	DESCRIPTION
1	5/18/26	J.A.M.	ADDENDUM NO. 1



DATE: 1/18/2023 10:51 AM, USER: JAM, PROJECT: 21107-01B, SHEET: C14, DRAWING: STORM WATER PLAN AND PROFILE, STA. 0+00 (B.O.P.) TO STA. 5+00, SCALE: HORIZ. 1"=40', VERT. 1"=7' (FULL SIZE SHEETS), SCALE: HORIZ. 1"=40', VERT. 1"=14' (HALF SIZE SHEETS)

REVISION NO.	DATE	DESCRIPTION

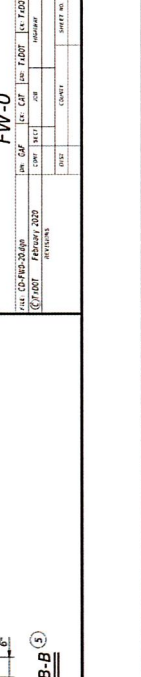
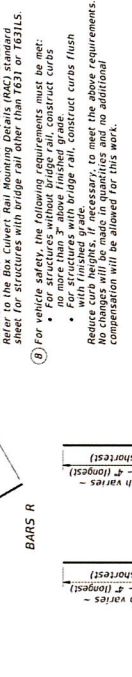
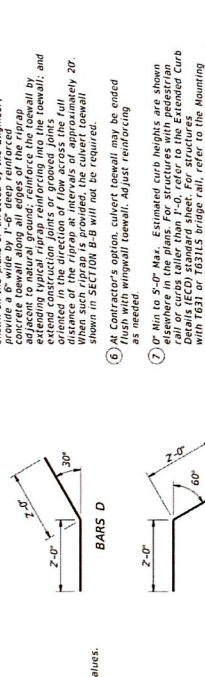




REVISION NO.	DATE	DESCRIPTION

1) Extend Bars P 3'-0" minimum into bottom slab of box culvert.
2) Adjust as necessary to maintain 1/2" clear cover and 4" minimum between bars.
3) Quantities shown are based on an average wing height for two wings (one structure end). To determine total quantities for two wings, multiply the tabulated values by LW.
4) Recommended values of side slope are: 2:1, 3:1, 4:1, and 6:1.
5) When shown elsewhere on the plans, construct toe walls as required by Item 425, "Riprap," unless otherwise shown on the plans or directed by the Engineer.
6) Concrete toe wall along all edges of the riprap adjacent to natural ground, reinforce the toe wall by extending construction joints or grooved joints oriented in the direction of flow across the full width of the toe wall. When such riprap is provided, the culvert toe wall shown in SECTION B-B will not be required.
7) At Contractor's option, culvert toe wall may be ended flush with wingwall toe wall. Adjust reinforcing as needed.
8) For vehicle safety, the following requirements must be met:
a. no more than 5'-0" Max. Estimated curb heights are shown on the plans or directed by the Engineer.
b. rail or curbs taller than 1'-0" refer to the Extended Curb Details (ECD) standard sheet. For structures Mounting Details for T631 & T631LS Rails (T631-CM) standard sheet. Refer to the Box Culvert Rail Mounting Details (P42) standard sheet for structures with bridge call other than T631 or T631LS.
9) For vehicle safety, the following requirements must be met:
a. no more than 3" above finished grade.
b. no structures with bridge rail, construct curbs flush with curbs.
c. Reduce curb heights, if necessary, to meet the above requirements. No changes will be made in quantities and no additional compensation will be allowed for this work.

MATERIAL NOTES:
1) Provide Class C concrete (f'c=3,600 psi).
2) Provide Grade 60 reinforcing steel.
3) Provide 1/2" concrete synthetic fibers (used on the toe wall) in riprap concrete synthetic fibers (used on the toe wall) may be used in lieu of steel reinforcing unless noted otherwise.
GENERAL NOTES:
1) Designed according to AASHTO LRFD Bridge Design Specifications.
2) When structure is founded on solid rock, depth of toe walls for culverts and wingwalls may be reduced as shown on the plans.
3) See Box Culvert Supplement (BES) standard sheet for additional dimensions and information.
4) Reinforcing steel information on this sheet are for Contractor's information only.



WING DIMENSION FORMULAS:
(All values are in feet.)
 $H_w = H + T + C - 0.250$
 $A = H_w - 0.333$ (SU)
 $L_w = (A) \tan(\text{Slope } 30^\circ)$
 For cast-in-place culverts:
 $L_w = (W) (S) + (W + 1) (U)$
 For precast culverts:
 $L_w = (W) (S) + (W + 1) (U)$
 Total wingwall area (two wings - SF) = $(H_w + 0.333) (L_w)$

TABLE OF ESTIMATED CULVERT TOEWALL QUANTITIES

Bar	Size	No.	Spa
D	#4	1	1'-0"
E	#4	1	1'-0"
F	#6	4	-
G	#4	4	1'-0"
H	#4	4	1'-0"
I	#4	6	1'-0"
J	#4	1	1'-0"
K	#4	1	1'-0"
L	#4	1	1'-0"
M	#4	1	1'-0"
N	#4	1	1'-0"
O	#4	1	1'-0"
P	#4	1	1'-0"
Q	#4	1	1'-0"
R	#4	1	1'-0"
S	#4	1	1'-0"
T	#4	1	1'-0"
U	#4	1	1'-0"
V	#4	1	1'-0"
W	#4	1	1'-0"
X	#4	1	1'-0"
Y	#4	1	1'-0"
Z	#4	1	1'-0"
AA	#4	1	1'-0"
AB	#4	1	1'-0"
AC	#4	1	1'-0"
AD	#4	1	1'-0"
AE	#4	1	1'-0"
AF	#4	1	1'-0"
AG	#4	1	1'-0"
AH	#4	1	1'-0"
AI	#4	1	1'-0"
AJ	#4	1	1'-0"
AK	#4	1	1'-0"
AL	#4	1	1'-0"
AM	#4	1	1'-0"
AN	#4	1	1'-0"
AO	#4	1	1'-0"
AP	#4	1	1'-0"
AQ	#4	1	1'-0"
AR	#4	1	1'-0"
AS	#4	1	1'-0"
AT	#4	1	1'-0"
AU	#4	1	1'-0"
AV	#4	1	1'-0"
AW	#4	1	1'-0"
AX	#4	1	1'-0"
AY	#4	1	1'-0"
AZ	#4	1	1'-0"
BA	#4	1	1'-0"
BB	#4	1	1'-0"
BC	#4	1	1'-0"
BD	#4	1	1'-0"
BE	#4	1	1'-0"
BF	#4	1	1'-0"
BG	#4	1	1'-0"
BH	#4	1	1'-0"
BI	#4	1	1'-0"
BJ	#4	1	1'-0"
BK	#4	1	1'-0"
BL	#4	1	1'-0"
BM	#4	1	1'-0"
BN	#4	1	1'-0"
BO	#4	1	1'-0"
BP	#4	1	1'-0"
BQ	#4	1	1'-0"
BR	#4	1	1'-0"
BS	#4	1	1'-0"
BT	#4	1	1'-0"
BU	#4	1	1'-0"
BV	#4	1	1'-0"
BW	#4	1	1'-0"
BX	#4	1	1'-0"
BY	#4	1	1'-0"
BZ	#4	1	1'-0"
CA	#4	1	1'-0"
CB	#4	1	1'-0"
CC	#4	1	1'-0"
CD	#4	1	1'-0"
CE	#4	1	1'-0"
CF	#4	1	1'-0"
CG	#4	1	1'-0"
CH	#4	1	1'-0"
CI	#4	1	1'-0"
CJ	#4	1	1'-0"
CK	#4	1	1'-0"
CL	#4	1	1'-0"
CM	#4	1	1'-0"
CN	#4	1	1'-0"
CO	#4	1	1'-0"
CP	#4	1	1'-0"
CQ	#4	1	1'-0"
CR	#4	1	1'-0"
CS	#4	1	1'-0"
CT	#4	1	1'-0"
CU	#4	1	1'-0"
CV	#4	1	1'-0"
CU	#4	1	1'-0"
CV	#4	1	1'-0"

TABLE OF ESTIMATED CULVERT TOEWALL QUANTITIES

Bar	Size	No.	Spa
D	#4	1	1'-0"
E	#4	1	1'-0"
F	#6	4	-
G	#4	4	1'-0"
H	#4	4	1'-0"
I	#4	6	1'-0"
J	#4	1	1'-0"
K	#4	1	1'-0"
L	#4	1	1'-0"
M	#4	1	1'-0"
N	#4	1	1'-0"
O	#4	1	1'-0"
P	#4	1	1'-0"
Q	#4	1	1'-0"
R	#4	1	1'-0"
S	#4	1	1'-0"
T	#4	1	1'-0"
U	#4	1	1'-0"
V	#4	1	1'-0"
W	#4	1	1'-0"
X	#4	1	1'-0"
Y	#4	1	1'-0"
Z	#4	1	1'-0"
AA	#4	1	1'-0"
AB	#4	1	1'-0"
AC	#4	1	1'-0"
AD	#4	1	1'-0"
AE	#4	1	1'-0"
AF	#4	1	1'-0"
AG	#4	1	1'-0"
AH	#4	1	1'-0"
AI	#4	1	1'-0"
AJ	#4	1	1'-0"
AK	#4	1	1'-0"
AL	#4	1	1'-0"
AM	#4	1	1'-0"
AN	#4	1	1'-0"
AO	#4	1	1'-0"
AP	#4	1	1'-0"
AQ	#4	1	1'-0"
AR	#4	1	1'-0"
AS	#4	1	1'-0"
AT	#4	1	1'-0"
AU	#4	1	1'-0"
AV	#4	1	1'-0"
AW	#4	1	1'-0"
AX	#4	1	1'-0"
AY	#4	1	1'-0"
AZ	#4	1	1'-0"
BA	#4	1	1'-0"
BB	#4	1	1'-0"
BC	#4	1	1'-0"
BD	#4	1	1'-0"
BE	#4	1	1'-0"
BF	#4	1	1'-0"
BG	#4	1	1'-0"
BH	#4	1	1'-0"
BI	#4	1	1'-0"
BJ	#4	1	1'-0"
BK	#4	1	1'-0"
BL	#4	1	1'-0"
BM	#4	1	1'-0"
BN	#4	1	1'-0"
BO	#4	1	1'-0"
BP	#4	1	1'-0"
BQ	#4	1	1'-0"
BR	#4	1	1'-0"
BS	#4	1	1'-0"
BT	#4	1	1'-0"
BU	#4	1	1'-0"
BV	#4	1	1'-0"
BW	#4	1	1'-0"
BX	#4	1	1'-0"
BY	#4	1	1'-0"
BZ	#4	1	1'-0"
CA	#4	1	1'-0"
CB	#4	1	1'-0"
CC	#4	1	1'-0"
CD	#4	1	1'-0"
CE	#4	1	1'-0"
CF	#4	1	1'-0"
CG	#4	1	1'-0"
CH	#4	1	1'-0"
CI	#4	1	1'-0"
CJ	#4	1	1'-0"
CK	#4	1	1'-0"
CL	#4	1	1'-0"
CM	#4	1	1'-0"
CN	#4	1	1'-0"
CO	#4	1	1'-0"
CP	#4	1	1'-0"
CQ	#4	1	1'-0"
CR	#4	1	1'-0"
CS	#4	1	1'-0"
CT	#4	1	1'-0"
CU	#4	1	1'-0"
CV	#4	1	1'-0"
CU	#4	1	1'-0"
CV	#4	1	1'-0"

TABLE OF ESTIMATED CULVERT TOEWALL QUANTITIES

Bar	Size	No.	Spa
D	#4	1	1'-0"
E	#4	1	1'-0"
F	#6	4	-
G	#4	4	1'-0"
H	#4	4	1'-0"
I	#4	6	1'-0"
J	#4	1	1'-0"
K	#4	1	1'-0"
L	#4	1	1'-0"
M	#4	1	1'-0"
N	#4	1	1'-0"
O	#4	1	1'-0"
P	#4	1	1'-0"
Q	#4	1	1'-0"
R	#4	1	1'-0"
S	#4	1	1'-0"
T	#4	1	1'-0"
U	#4	1	1'-0"
V	#4	1	1'-0"
W	#4	1	1'-0"
X	#4	1	1'-0"
Y	#4	1	1'-0"
Z	#4	1	1'-0"
AA	#4	1	1'-0"
AB	#4	1	1'-0"
AC	#4	1	1'-0"
AD	#4	1	1'-0"
AE	#4	1	1'-0"
AF	#4	1	1'-0"
AG	#4	1	1'-0"
AH	#4	1	1'-0"
AI	#4	1	1'-0"
AJ	#4	1	1'-0"
AK	#4	1	1'-0"
AL	#4	1	1'-0"
AM	#4	1	1'-0"
AN	#4	1	1'-0"
AO	#4	1	1'-0"
AP	#4	1	1'-0"
AQ	#4	1	1'-0"
AR	#4	1	1'-0"
AS	#4	1	1'-0"
AT	#4	1	1'-0"
AU	#4	1	1'-0"
AV	#4	1	1'-0"
AW	#4	1	1'-0"
AX	#4	1	1'-0"
AY	#4	1	1'-0"
AZ	#4	1	1'-0"
BA	#4	1	1'-0"
BB	#4	1	1'-0"
BC	#4	1	1'-0"
BD	#4	1	1'-0"
BE	#4	1	1'-0"
BF	#4	1	1'-0"
BG	#4	1	1'-0"
BH	#4	1	1'-0"
BI	#4	1	1'-0"
BJ	#4	1	1'-0"
BK	#4	1	1'-0"
BL	#4	1	1'-0"
BM	#4	1	1'-0"
BN	#4	1	1'-0"
BO	#4	1	1'-0"
BP	#4	1	1'-0"
BQ	#4	1	1'-0"
BR	#4	1	1'-0"
BS	#4	1	1'-0"
BT	#4	1	1'-0"
BU	#4	1	1'-0"
BV	#4	1	1'-0"
BW	#4	1	1'-0"</

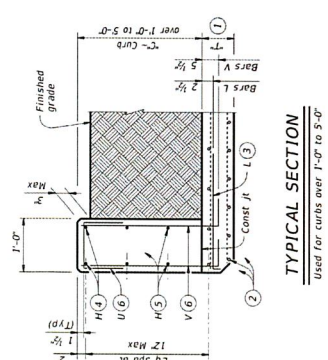
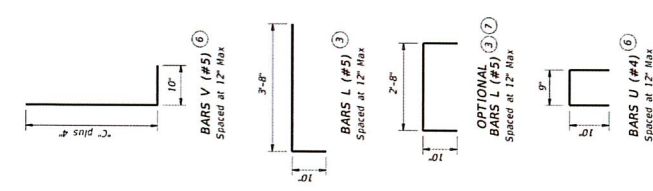


REVISION NO.	DATE	DESCRIPTION

TABLE OF ESTIMATED CURB QUANTITIES (6)

Curb Height, "C"	Conc. (CY/LF)	Reinf. (LB/LF)
1'-0"	0.037	10.4
1'-6"	0.056	14.5
2'-0"	0.074	15.6
2'-6"	0.093	18.0
3'-0"	0.111	19.0
4'-0"	0.130	21.3
4'-6"	0.148	24.8
5'-0"	0.185	25.9

1. "C" is equal to the culvert top slab thickness. For precast concrete slabs less than 8" thick, see SCP-10 standard for additional details.
2. Adjust normal culvert slab bars as necessary to clear obstructions.
3. Place bars L as shown. Fill back as necessary to maintain cover.
4. Place normal culvert curb bars H(e4) as necessary to clear obstructions.
5. Additional bars H(e4) as required to maintain 12" Max spacing.
6. Replace normal culvert curb bars K with one bar U and two bars V as shown spaced at 12" Max. Adjust necessary to maintain clear cover.
7. Optional bars L ties to be used only for precast box culverts with 3'-0" closure pour.
8. Quantities shown are for Contractor's information only. Quantities are per linear foot of curb. The value in table can be interpolated for intermediate values of curb height. "C" quantity includes bars K (when applicable).



CONSTRUCTION NOTES:
Adjust reinforcing steel as necessary to provide 1"r cover. For precast concrete, the curb must not project more than 3" above the finished grade.

MATERIAL NOTES:
Provide galvanized reinforcing steel if required elsewhere in the project.
Provide Class "C" concrete (f'c = 3600 psi) minimum for curbs.
Provide bar laps, where required, as follows:
• Uncoated or galvanized - #4 = 1'-8" Min

GENERAL NOTES:
According to ASHTO LRFD Bridge Design Specifications.
These extended curb details have sufficient strength to resist the full design load of a 20 kip HS20 truck.
These details are suitable for use with FH11, FH22 and FH3 type rails. These details are not suitable for the mounting of 18" or larger manholes using F631 or F631LS railing, use the F631-SN standard.
This Curb is considered as part of the Box Culvert for purposes of the design.

Clear dimensions are clear dimensions, unless noted otherwise.
Reinforcing bar dimensions shown are out-to-out of bar.

Texas Department of Transportation
Bridge Division
Standard

EXTENDED CURB DETAILS FOR BOX CULVERTS WITH CURBS OVER 1'-0" TO 5'-0" TALL

ECD

DATE: 02/02/2020
DRAWN BY: [blank]
CHECKED BY: [blank]
DATE: [blank]
SCALE: [blank]
PROJECT NO.: [blank]
SHEET NO.: [blank]



COMMUNITY DEVELOPMENT & REVITALIZATION
The Texas General Land Office
Wage Rate Issuance Notice

The Davis-Bacon Act requires that a valid Wage Decision be included in the bid package and construction contract specifications before bids are opened and that it be in effect on the date of the construction contract award.

Obtain the most current Davis-Bacon wage decisions: <https://beta.sam.gov>

Subrecipient:	City of Kingsville, Texas	Contract Number:	22-085-009-D237
Date:	5/20/2026		
Labor Standards Officer Name:	Gustavo Jimenez		

I have determined the following General Wage Decision to be applicable for this construction work:

Wage Decision Number:	TX20260088 M1	Published Date:	5/18/2026
Type of Work (check one):	<input checked="" type="checkbox"/> Heavy <input type="checkbox"/> Highway <input type="checkbox"/> Building <input type="checkbox"/> Residential		
Distributed by LSO:	Gustavo Jimenez	Date distributed:	5/20/2026
Description of Bid Activity:	Drainage Improvements; (Project 7, South 6th St) Project will replace storm sewer culverts, regrade roadside ditches, install outfall ditches with associated pavement repair, install storm sewer inlets, and complete all associated appurtenances.		
Estimated Bid Opening Date:	6/2/2026		

ISSUED BY:

Labor Standards Officer Name:	Gustavo Jimenez
-------------------------------	-----------------

Address:	City:	State:	Zip Code:
2201 Northland Drive	Austin	Texas	78756

Phone Number:	Email:
512-337-9959	gustavo.jimenez@grantworks.net

Disclaimer: The Texas General Land Office has made every effort to ensure the information contained on this form is accurate and in compliance with the most up-to-date CDBG-DR and/or CDBG-MIT federal rules and regulations, as applicable. It should be noted that the Texas General Land Office assumes no liability or responsibility for any error or omission on this form that may result from the interim period between the publication of amended and/or revised federal rules and regulations and the Texas General Land Office's standard review and update schedule.

"General Decision Number: TX20260088 05/18/2026

State: Texas

Construction Types: Heavy

Counties: Texas Counties of Bee, Colorado, Fayette, Gonzales, Jackson, Jim Wells, Karnes, Kleberg, Lavaca, Live Oak, Refugio and Wharton

Excludes Flood Control

Modification Number	Publication Date
0	01/02/2026
1	05/18/2026

SUTX2009-125 04/21/2009

	Rates	Fringes
TRUCK DRIVER.....	\$ 10.49	0.24
OPERATOR: LOADER (FRONT END).....	\$ 11.13	0.00
OPERATOR: BULLDOZER.....	\$ 14.25	0.00
OPERATOR: BACKHOE/TRACKHOE.....	\$ 13.25	0.00
LABORER: PIPELAYER.....	\$ 13.75	0.00
LABORER: COMMON OR GENERAL.....	\$ 9.11	0.00
CEMENT MASON/CONCRETE FINISHER.....	\$ 13.00	0.00

WELDERS - Receive rate prescribed for craft performing operation to which welding is incidental.

=====
Note: Executive Order (EO) 13706, Establishing Paid Sick Leave for Federal Contractors applies to all contracts subject to the Davis-Bacon Act for which the contract is awarded (and any solicitation was issued) on or after January 1, 2017. If this contract is covered by the EO, the contractor must provide employees with 1 hour of paid sick leave for every 30 hours they work, up to 56 hours of paid sick leave each year. Employees must be permitted to use paid sick leave for their own illness, injury or other health-related needs, including preventive care; to assist a family member (or person who is like family to the employee) who is ill, injured, or has other health-related needs, including preventive care; or for reasons resulting from, or to assist a family member (or person who is like family to the employee) who is a victim of, domestic violence, sexual assault, or stalking. Additional information on contractor requirements and worker protections under the EO is available at <https://www.dol.gov/agencies/whd/government-contracts>.

Note: Executive Order 13658 generally applies to contracts subject to the Davis-Bacon Act that were awarded on or between January 1, 2015 and January 29, 2022, and that have not been renewed or extended on or after January 30, 2022. Executive Order 13658 does not apply to contracts subject only to the Davis-Bacon Related Acts regardless of when they were awarded. If a contract is subject to

Executive Order 13658, the contractor must pay all covered workers at least \$13.65 per hour (or the applicable wage rate listed on this wage determination, if it is higher) for all hours spent performing on the contract from May 11, 2026, through December 31, 2026. The applicable Executive Order minimum wage rate will be adjusted annually. Additional information on contractor requirements and worker protections under Executive Order 13658 is available at www.dol.gov/whd/govcontracts.

Unlisted classifications needed for work not included within the scope of the classifications listed may be added after award only as provided in the labor standards contract clauses (29CFR 5.5 (a) (1) (iii)).

The body of each wage determination lists the classifications and wage rates that have been found to be prevailing for the type(s) of construction and geographic area covered by the wage determination. The classifications are listed in alphabetical order under rate identifiers indicating whether the particular rate is a union rate (current union negotiated rate), a survey rate, a weighted union average rate, a state adopted rate, or a supplemental classification rate.

Union Rate Identifiers

A four-letter identifier beginning with characters other than **◆SU◆**, **◆UAVG◆**, **◆SA◆**, or **◆SC◆** denotes that a union rate was prevailing for that classification in the survey. Example: PLUM0198-005 07/01/2024. PLUM is an identifier of the union whose collectively bargained rate prevailed in the survey for this classification, which in this example would be Plumbers. 0198 indicates the local union number or district council number where applicable, i.e., Plumbers Local 0198. The next number, 005 in the example, is an internal number used in processing the wage determination. The date, 07/01/2024 in the example, is the effective date of the most current negotiated rate.

Union prevailing wage rates are updated to reflect all changes over time that are reported to WHD in the rates in the collective bargaining agreement (CBA) governing the classification.

Union Average Rate Identifiers

The UAVG identifier indicates that no single rate prevailed for those classifications, but that 100% of the data reported for the classifications reflected union rates. EXAMPLE: UAVG-OH-0010 01/01/2024. UAVG indicates that the rate is a weighted union average rate. OH indicates the State of Ohio. The next number, 0010 in the example, is an internal number used in producing the wage determination. The date, 01/01/2024 in the example, indicates the date the wage determination was updated to reflect the most current union average rate.

A UAVG rate will be updated once a year, usually in January, to reflect a weighted average of the current rates in the collective bargaining agreements on which the rate is based.

Survey Rate Identifiers

The **◆SU◆** identifier indicates that either a single non-union rate prevailed (as defined in 29 CFR 1.2) for this classification in the survey or that the rate was derived by computing a weighted average rate based on all the rates

reported in the survey for that classification. As a weighted average rate includes all rates reported in the survey, it may include both union and non-union rates. Example: SUFL2022-007 6/27/2024. SU indicates the rate is a single non-union prevailing rate or a weighted average of survey data for that classification. FL indicates the State of Florida. 2022 is the year of the survey on which these classifications and rates are based. The next number, 007 in the example, is an internal number used in producing the wage determination. The date, 6/27/2024 in the example, indicates the survey completion date for the classifications and rates under that identifier.

◆SU◆ wage rates typically remain in effect until a new survey is conducted. However, the Wage and Hour Division (WHD) has the discretion to update such rates under 29 CFR 1.6(c)(1).

State Adopted Rate Identifiers

The ◆SA◆ identifier indicates that the classifications and prevailing wage rates set by a state (or local) government were adopted under 29 C.F.R 1.3(g)-(h). Example: SAME2023-007 01/03/2024. SA reflects that the rates are state adopted. ME refers to the State of Maine. 2023 is the year during which the state completed the survey on which the listed classifications and rates are based. The next number, 007 in the example, is an internal number used in producing the wage determination. The date, 01/03/2024 in the example, reflects the date on which the classifications and rates under the ◆SA◆ identifier took effect under state law in the state from which the rates were adopted.

WAGE DETERMINATION APPEALS PROCESS

1) Has there been an initial decision in the matter? This can be:

- a) a survey underlying a wage determination
- b) an existing published wage determination
- c) an initial WHD letter setting forth a position on a wage determination matter
- d) an initial conformance (additional classification and rate) determination

On survey related matters, initial contact, including requests for summaries of surveys, should be directed to the WHD Branch of Wage Surveys. Requests can be submitted via email to davisbaconinfo@dol.gov or by mail to:

Branch of Wage Surveys
Wage and Hour Division
U.S. Department of Labor
200 Constitution Avenue, N.W.
Washington, DC 20210

Regarding any other wage determination matter such as conformance decisions, requests for initial decisions should be directed to the WHD Branch of Construction Wage Determinations. Requests can be submitted via email to BCWD-Office@dol.gov or by mail to:

Branch of Construction Wage Determinations
Wage and Hour Division
U.S. Department of Labor
200 Constitution Avenue, N.W.
Washington, DC 20210

2) If an initial decision has been issued, then any interested party (those affected by the action) that disagrees with the decision can request review and reconsideration from the Wage and Hour Administrator (See 29 CFR Part 1.8 and 29 CFR Part 7). Requests for review and reconsideration can be submitted via email to dba.reconsideration@dol.gov or by mail to:

Wage and Hour Administrator
U.S. Department of Labor
200 Constitution Avenue, N.W.
Washington, DC 20210

The request should be accompanied by a full statement of the interested party's position and any information (wage payment data, project description, area practice material, etc.) that the requestor considers relevant to the issue.

3) If the decision of the Administrator is not favorable, an interested party may appeal directly to the Administrative Review Board (formerly the Wage Appeals Board). Write to:
Administrative Review Board
U.S. Department of Labor
200 Constitution Avenue, N.W.
Washington, DC 20210.

=====

END OF GENERAL DECISION

..